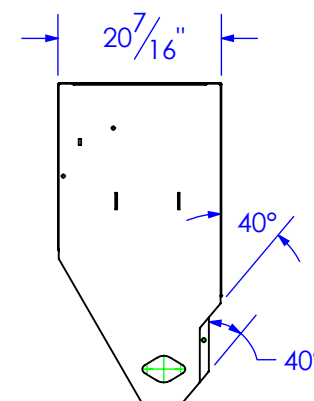
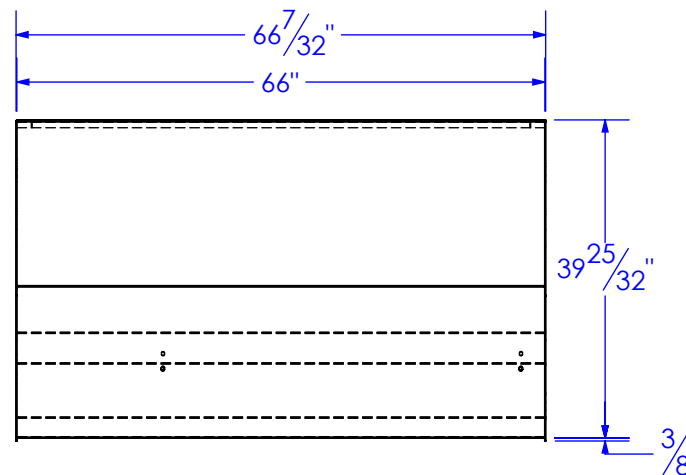
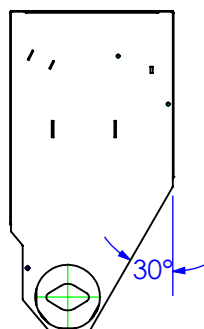
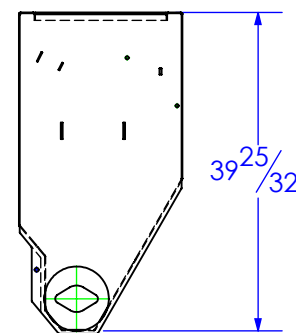
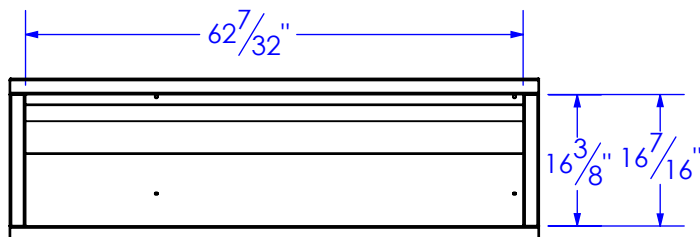
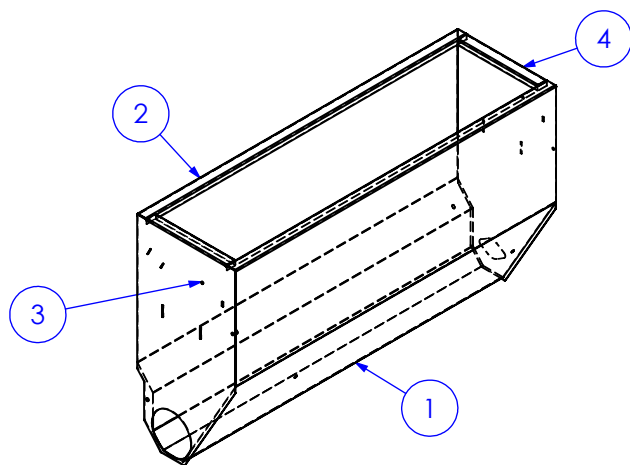


ITEM NO.	PART NUMBER	DESCRIPTION	DRAWING #	QTY.
	HF12-2	BACK, BREAK SHEET, HF-1200	30-2202	1
	HF12-3	FRONT, BREAK SHEET, HF-1200	30-2203	1
	HF12-5D	END, DISCHARGE, HF-1200	30-2200	1
	HF12-5M	END MOTOR, HF-1200	30-2201	1

REVISIONS			
REV.	DESCRIPTION	DATE	APPROVED
C	REVISE DESIGN	1/4/2019	



PROPRIETARY AND CONFIDENTIAL
 THE INFORMATION CONTAINED IN THIS
 DRAWING IS THE SOLE PROPERTY OF TRIPLE
 C INC. ANY REPRODUCTION IN PART OR
 AS A WHOLE WITHOUT THE WRITTEN
 PERMISSION OF TRIPLE C, INC IS PROHIBITED.

UNLESS OTHERWISE SPECIFIED:
 DIMENSIONS ARE IN INCHES
 TOLERANCES:
 FRACTIONAL $\pm 1/16$
 ANGULAR: MACH ± 1 BEND \pm
 TWO PLACE DECIMAL $\pm .010$
 THREE PLACE DECIMAL $\pm .005$

MATERIAL
 DO NOT SCALE DRAWING

NAME	DATE
ETHAN	1/4/2019
PART #	Part #
ASM #	HF-12-1D
COMMENTS:	
BODY WLD MNT, HF-1200	

P.O. BOX 248, SABETHA, KS 66534
 (785) 284-3674 FAX (785) 284-3931



SIZE	DWG. NO.	REV
A	30-1201	C
SCALE: 1:24	WEIGHT: 224.71	SHEET 1 OF 1